

HEALTH, SAFETY AND ENVIRONMENT POLICY

THE AIM

We want to maintain an efficient and effective company management system that meets the requirements of the UNI ISO 45001 and UNI EN ISO 14001 standards and fulfil the expectations of all parties involved. We are committed to **pursuing the best possible conditions** of health and safety in the workplace and the environment, by complying with the requirements of the prevention and continuous improvement principles, in an environment where people can grow professionally and feel part of a high-performance team. We continuously challenge ourselves to obtain our customers appreciation.

Therefore, we want to "make construction better" to be "the best partner for our customers in terms of productivity, safety and sustainability".

OUR VALUES

Teamwork

We firmly believe in team work. We support each other and are there for our colleagues, customers, suppliers and partners.



Courage

We have the courage to dare, think differently and encourage our customers to do so too.

Integrity

We act with integrity in all we do. We make sure that our actions always comply with our commitments, company policies and applicable legislations.



Commitment

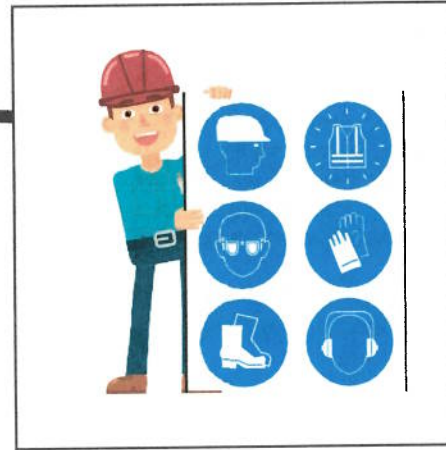
We are committed to everything we do. We always go the extra mile to help our customers, colleagues, suppliers and partners.

THE OBJECTIVES

Preventing pollution and protecting the environment



Eliminating dangers and reducing risks



Complying with conformity obligations



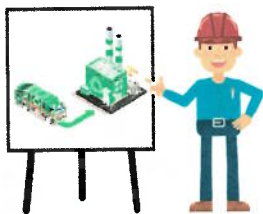
Participation and Involvement of all parties



Promoting expertise and awareness



Managing and limiting the production of waste



Improvement of performances



Optimizing the consumption of energy resources



Continuous improvement

OUR INTENT

We want to develop a culture of health, safety and the environment that stimulates the care of people, the improvement of working conditions and promotes their sustainability.

OUR COMMITMENTS

- Comply with the applicable legislations and Standards;
- Consider health, safety and the environmental aspects of every activity as an integral part of the organization, improving our performance and complying with high operational standards;
- Pursue the prevention of injuries, occupational-related illnesses and accidents promoting active reporting of dangerous situations and learning from them;
- Remove hazards and reduce risks through the use of PPE and support tools provided;
- Optimize energy consumptions by using renewable energy sources and reducing environmental impacts;
- Promote the recovery and recycling of waste according to the circular economy's principles by reducing the use of packaging and increasing the reuse of materials;
- Promote initiatives aimed at improving the wellbeing of all workers with awareness campaigns regarding the impact of fatigue and stress on workers;
- Provide continuous training and information to increase awareness and promote opportunities for interaction;
- Stop the activity when there is any doubt that it cannot be continued safely;
- Pursue the progressive reduction of CO2 emissions and the ecological footprint deriving from our activities and products, through targeted actions and adherence to compensation projects;
- Replace materials and substances that have potentially dangerous effects on the environment, human health and well-being;
- Circulate this policy to all partners.



The Management

24/01/2024

