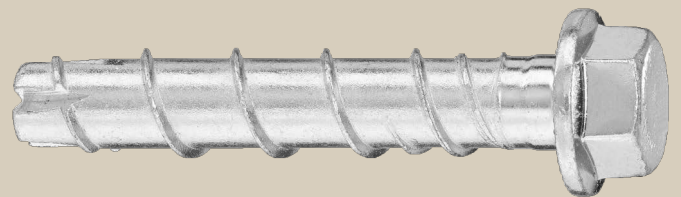




# Hilti HUS3-HCC SCREW ANCHOR

**Technical Datasheet**



Update: Jan-23


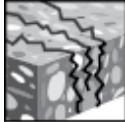
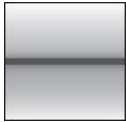
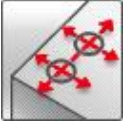


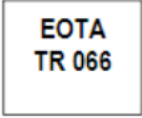




# HUS3 Screw anchor

Ultimate performance screw anchor for single point fastening

Anchor version	Benefits
  <p data-bbox="732 450 858 510">HUS3-H (8, 10, 14)</p> <p data-bbox="732 651 911 770">HUS3-H with HUS3-HCC 14 plastic cap (14)</p>	<ul style="list-style-type: none"> <li>- High productivity - less drilling and fewer operations than with conventional anchors</li> <li>- ETA approval for concrete overlays</li> <li>- Small edge and spacing distance</li> <li>- Three embedment depths for maximum design flexibility</li> <li>- Immediate placement of the reinforcement</li> <li>- HUS3-HCC 14 plastic cap simplify placing of the rebar on the jobsite</li> </ul>

Base material	Load conditions	
  <p data-bbox="113 1256 268 1312">Concrete (non-cracked)</p> <p data-bbox="316 1256 421 1312">Concrete (cracked)</p>	 <p data-bbox="821 1256 946 1312">Static / quasi-static</p>	
Installation conditions	Other information	Design Method
 <p data-bbox="113 1523 268 1603">Small edge distance and spacing</p>	 <p data-bbox="815 1523 952 1603">European Technical Assessment</p>  <p data-bbox="994 1523 1112 1576">CE conformity</p>	 <p data-bbox="1310 1406 1398 1464">EOTA TR 066</p>

## Approvals / certificates

Description	Authority / Laboratory	No. / date of issue
European Technical Assessment	DIBt, Berlin	ETA-13/1038 / 22-07-2019

Setting instructions

