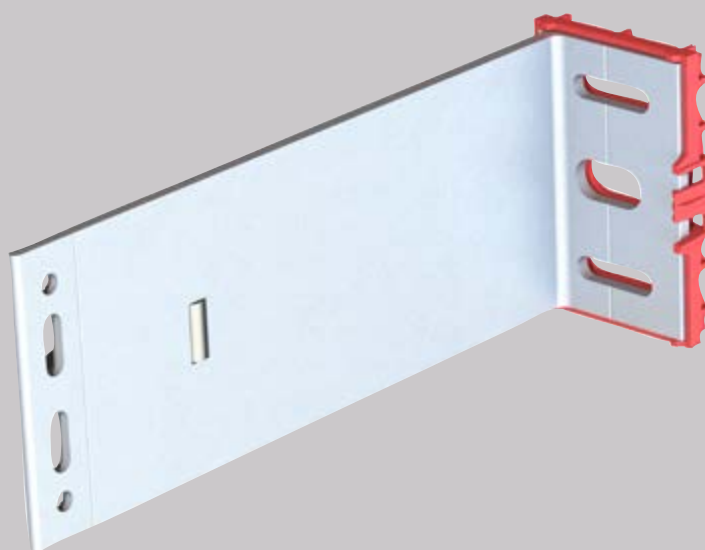




# MFT-FOX VI-1L- MORSETTI- ALLUMINIO

Sistema di Facciata Ventilata  
Hilti



## CONTENUTI

Pannelli	3
Applicazione e Descrizione	4
Disegni di Sistema	5-17
Tipologie di Staffe	
MFT-FOX VI Small	18
MFT-FOX VI Medium	19
MFT-FOX VI Large	20
Capacità di Regolazione	21
Prodotti	22-23

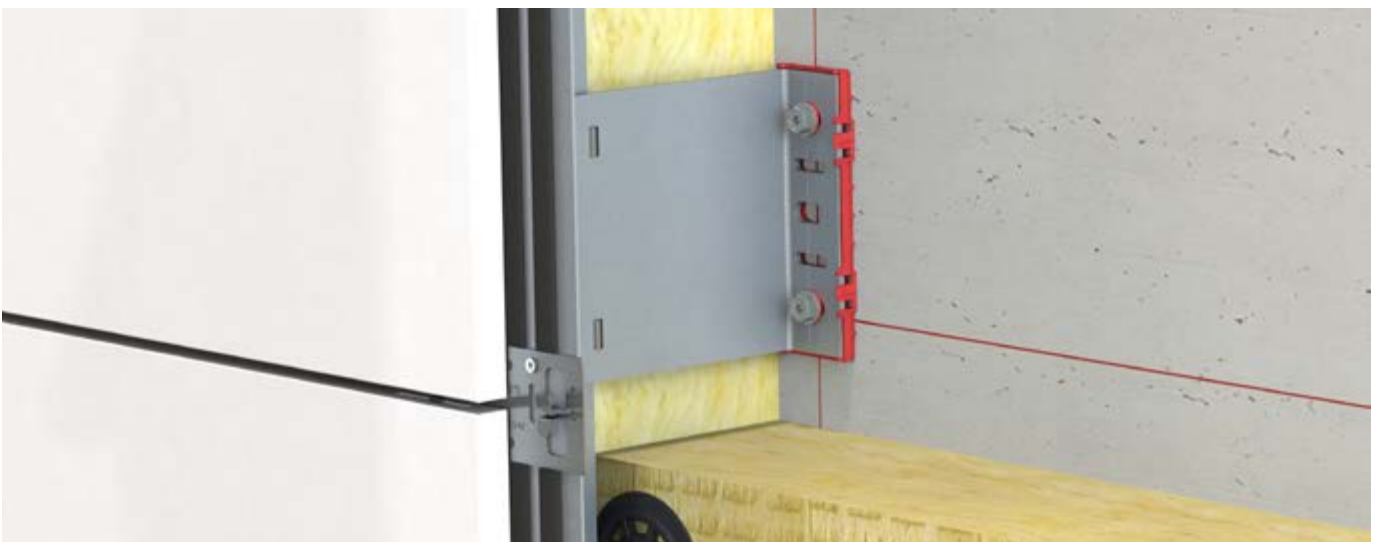
MFT-FOX VI-1L-morsetti-alluminio

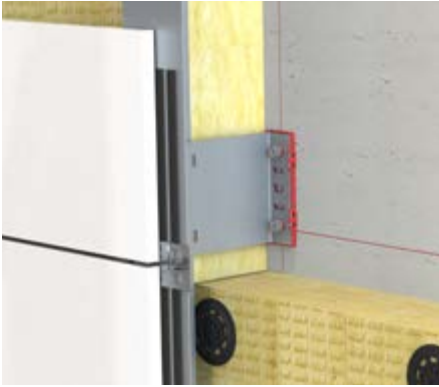


Ceramic



Terracotta





## APPLICAZIONE E DESCRIZIONE

### MFT-FOX VI-1L-morsetti-alluminio

Il sistema consiste in mensole e profili in alluminio ed è progettato specificamente per sottostrutture verticali in facciate ventilate mediante morsetti in acciaio inox per il fissaggio di materiale di rivestimento alla sottostruttura. Il materiale di rivestimento presenta delle scanalature nei lati superiore e inferiore in modo da creare un metodo di fissaggio a scomparsa.

Le mensole sono fornite con elementi isolanti preassemblati e, secondo il metodo di installazione al materiale base (tasselli, viti o fissaggio diretto), con diverse geometrie dei fori nella piastra base (le geometrie dei fori disponibili sono illustrate nel catalogo o nelle pagine seguenti).

Le mensole sono progettate con punti sia fissi che flessibili, per consentire l'espansione termica del profilo. Il punto fisso assorbe il peso dei pannelli e della sottostruttura e i carichi del vento proporzionali, mentre il punto flessibile assorbe solo i carichi del vento proporzionali.

I profili verticali sono connessi alle mensole con viti appositamente studiate per punti fissi e flessibili. I punti fissi non consentono il movimento verticale dei profili contro le mensole, mentre i punti flessibili consentono uno scorrimento, praticamente senza attrito, dei profili contro le mensole. Il punto flessibile consente di evitare l'aggiunta di carichi alla sottostruttura a seguito delle forze di espansione del profilo.

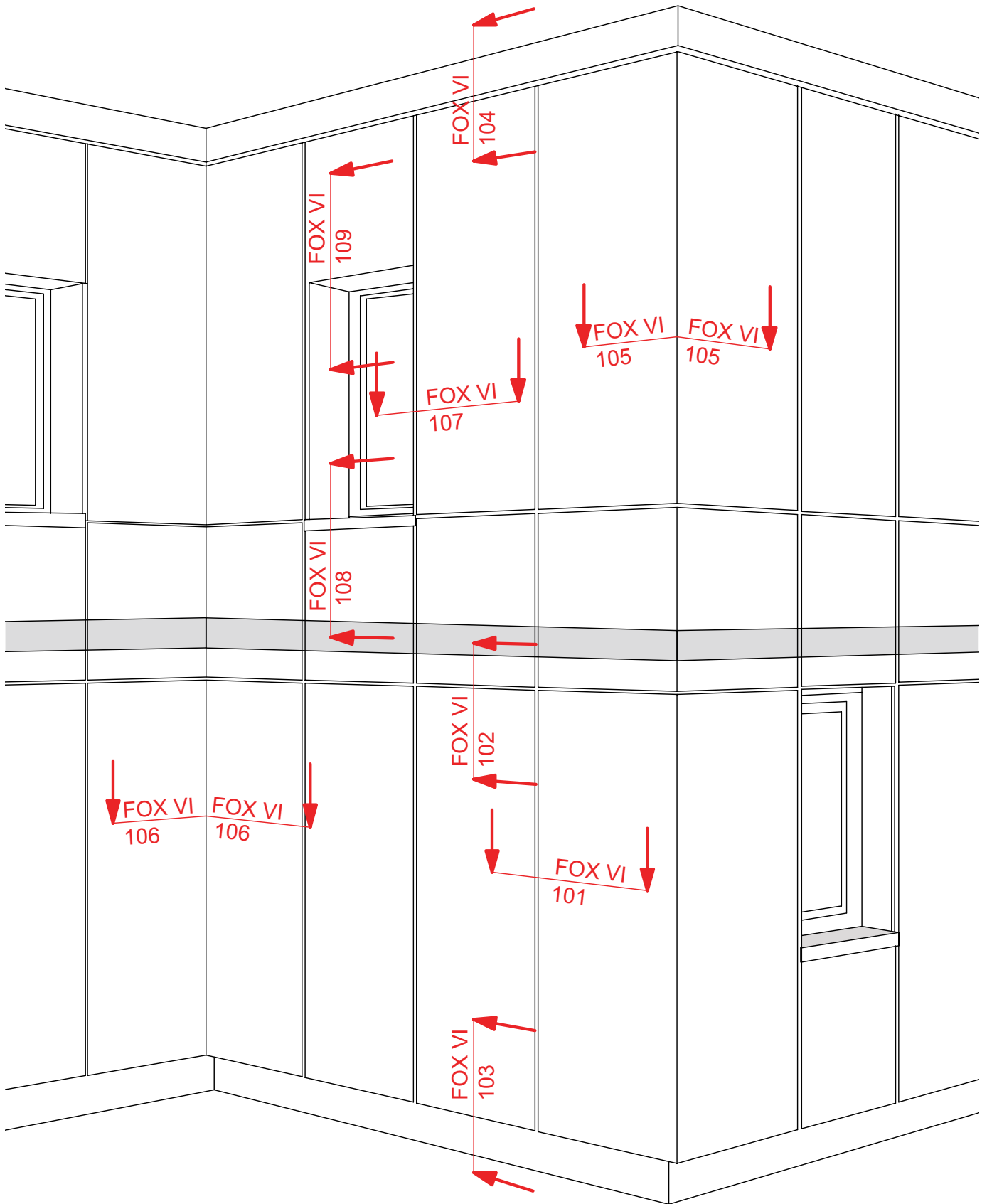
L'adattamento dei profili rispetto alle mensole è agevolato da un elemento ausiliario. Tale elemento ausiliario tiene il profilo in posizione mentre questo viene fissato con viti, in modo da rendere più rapido il processo di connessione alla mensola. Con questo sistema, è possibile compensare perfettamente una tolleranza dimensionale delle pareti fino a 40 mm. Le mensole sono disponibili in 3 diverse misure (grande, media e piccola), da 40 mm a 300 mm, incluso un elemento isolante di 6 mm, con incrementi di 20 mm. L'elemento isolante separa la sottostruttura dal materiale base, per ridurre il ponte termico.

Le mensole in acciaio inox sono fissate ai profili mediante viti o rivetti e sono disponibili in diverse misure.

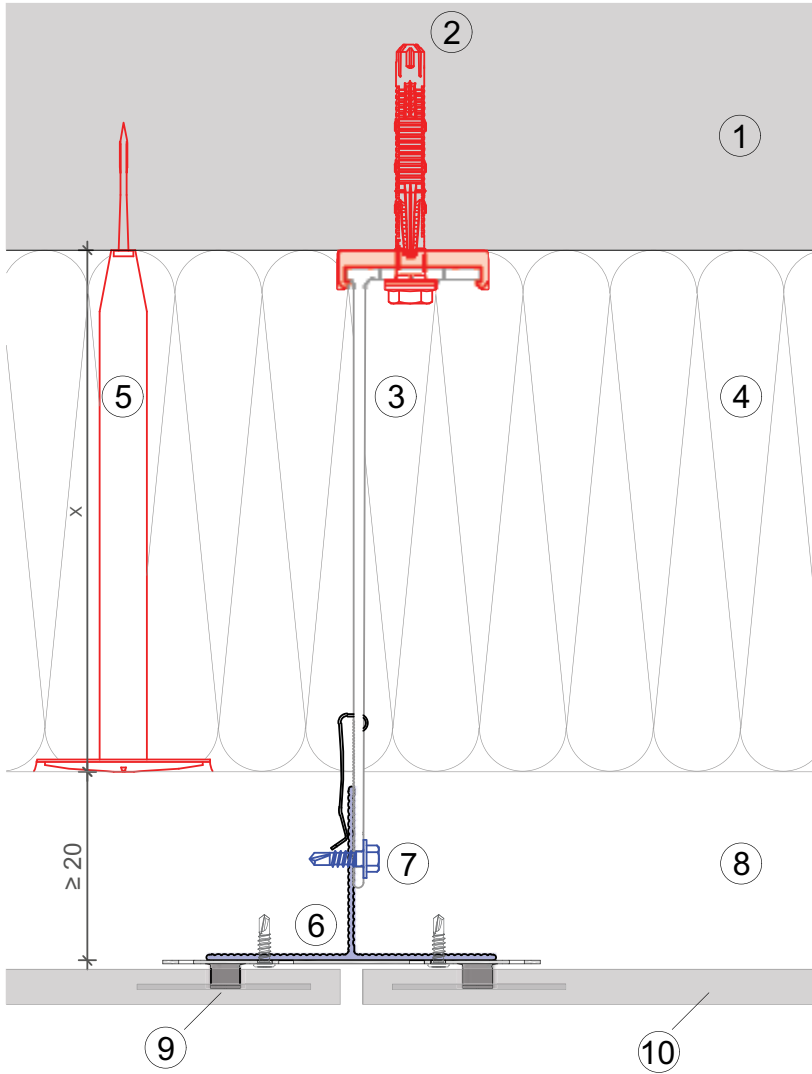
### Vantaggi

- Design flessibile con punti fissi e flessibili
- Tre diverse misure: grande, media e piccola
- Adattamento della mensola rispetto al profilo fino a 40 mm
- Le mensole possono essere montate con diversi metodi: tasselli, viti o fissaggio diretto
- Un elemento isolante di 6 mm separa la sottostruttura dal materiale base, per ridurre il ponte termico
- Le sottostrutture possono essere dimensionate mediante il software PROFIS Facade, per generare soluzioni tecnicamente accettabili e ottimizzate dal punto di vista economico
- Fissaggio a scomparsa

DISEGNI DI SISTEMA

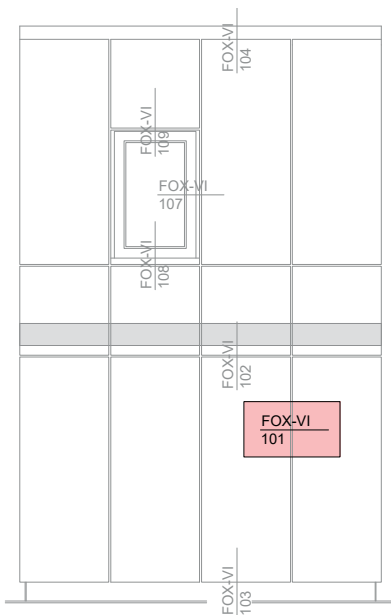


# MFT-FOX VI 101



**Legend:**

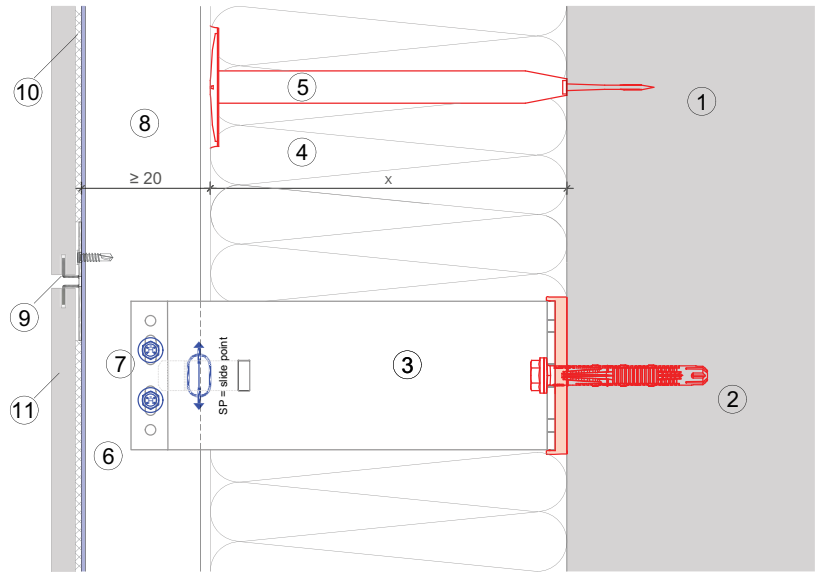
- ① Base material
- ② Anchor acc. to static
- ③ Bracket and isolator MFT-FOX VI
- ④ Insulation
- ⑤ Fixing insulation
- ⑥ Profile
- ⑦ Self drilling screw
- ⑧ Ventilation gap
- ⑨ Hidden clamp MFT-CH
- ⑩ Cladding



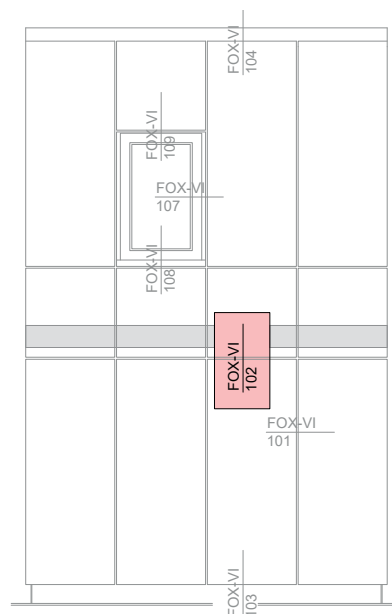
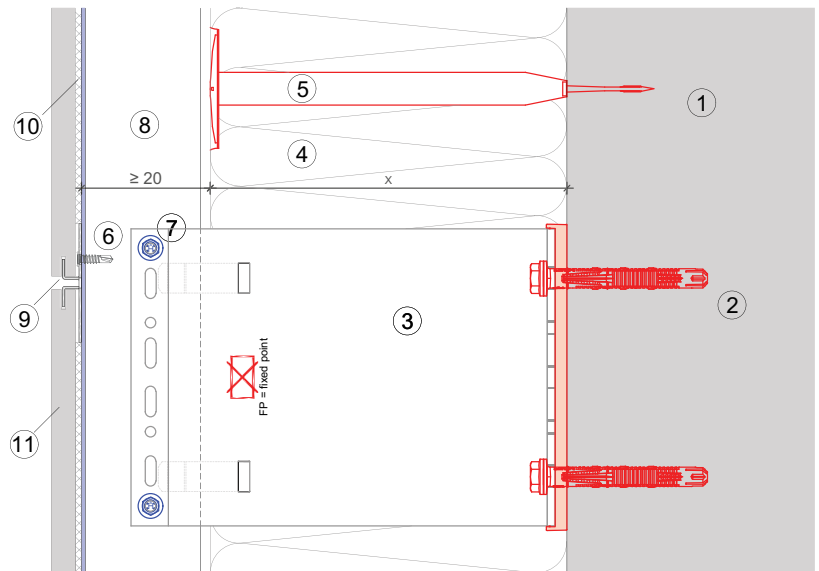
MFT-FOX VI 102

Legend:

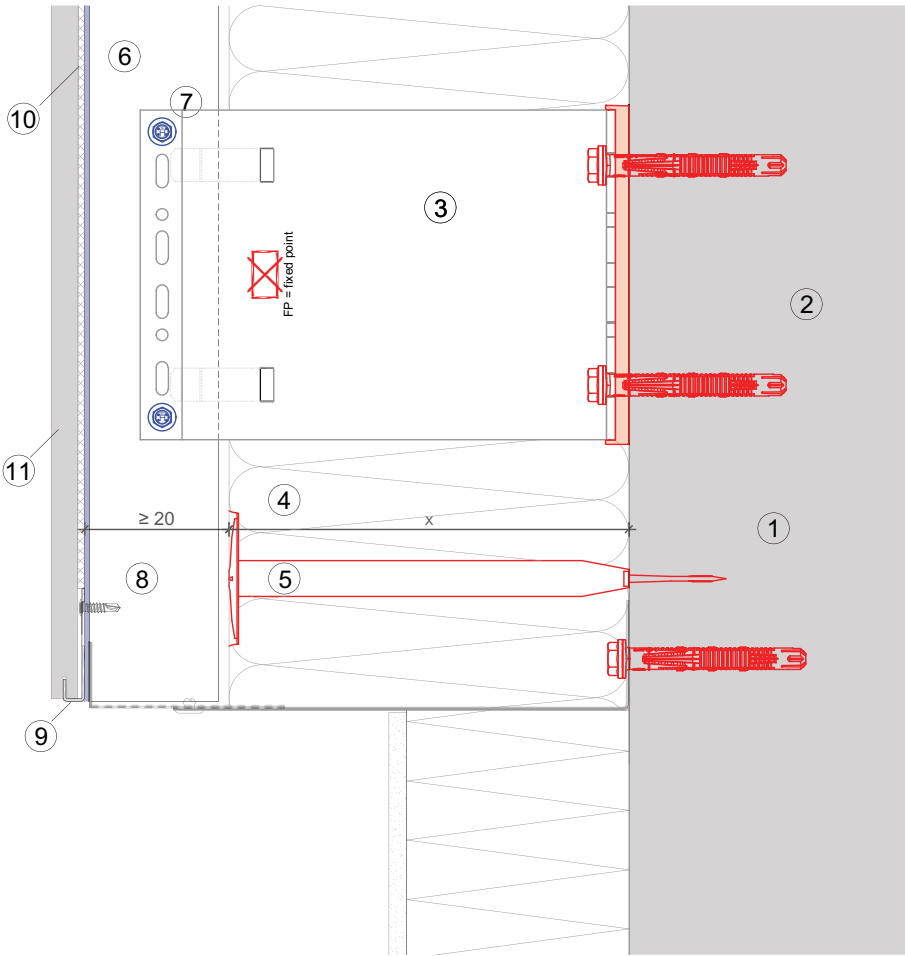
- ① Base material
- ② Anchor acc. to static
- ③ Bracket and isolator MFT-FOX VI
- ④ Insulation
- ⑤ Fixing insulation
- ⑥ Profile
- ⑦ Self drilling screw
- ⑧ Ventilation gap
- ⑨ Hidden clamp MFT-CH
- ⑩ Cladding



Vertical section-fixed point

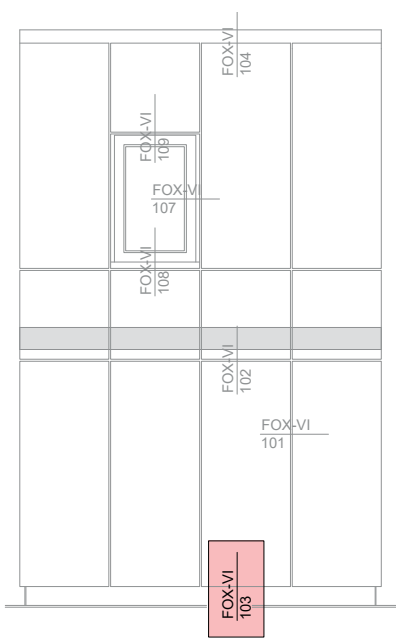


# MFT-FOX VI 103



**Legend:**

- ① Base material
- ② Anchor acc. to static
- ③ Bracket and isolator MFT-FOX VI
- ④ Insulation
- ⑤ Fixing insulation
- ⑥ Profile
- ⑦ Self drilling screw
- ⑧ Ventilation gap
- ⑨ Hidden clamp MFT-CH
- ⑩ Cladding

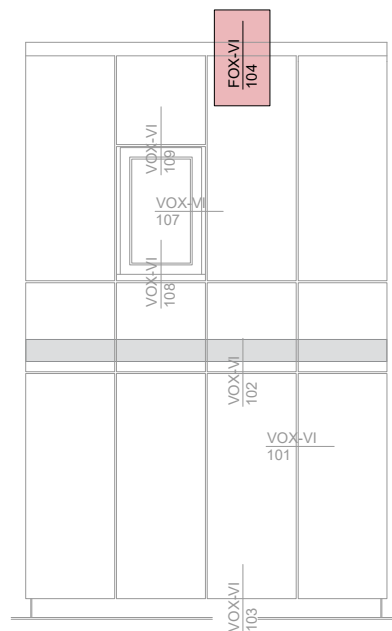
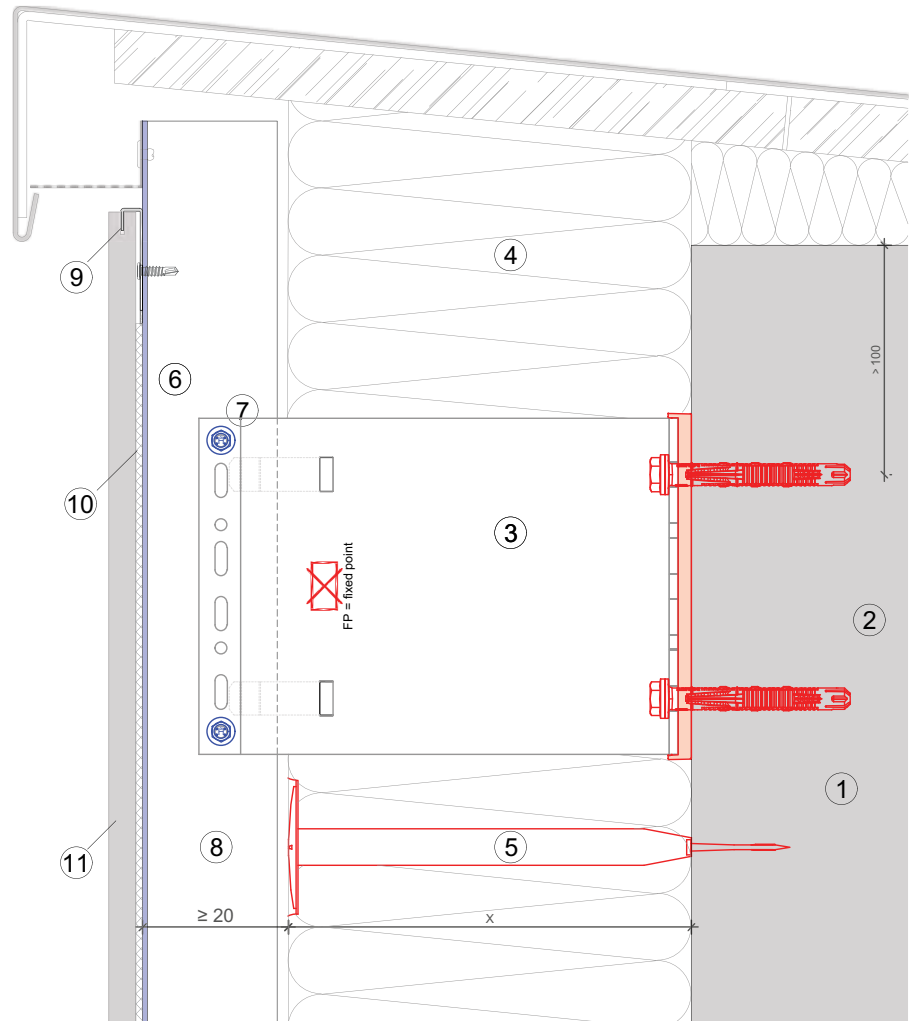




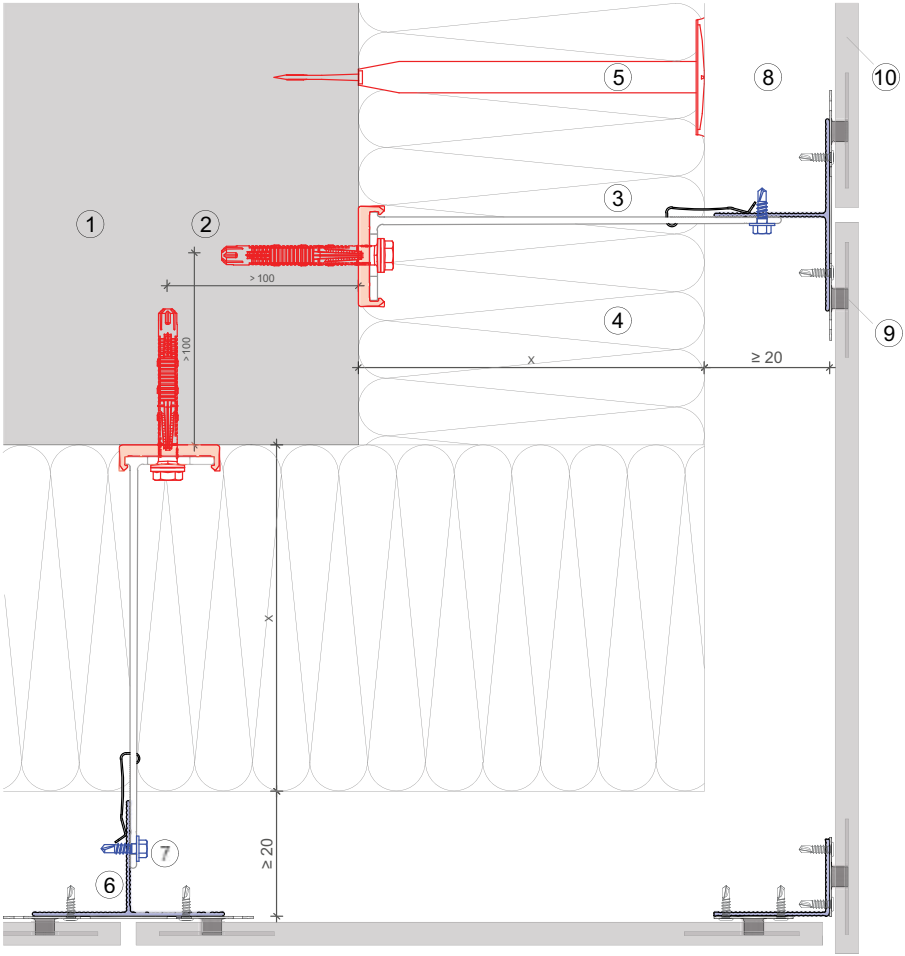
MFT-FOX VI 104

Legend:

- ① Base material
- ② Anchor acc. to static
- ③ Bracket and isolator MFT-FOX VI
- ④ Insulation
- ⑤ Fixing insulation
- ⑥ Profile
- ⑦ Self drilling screw
- ⑧ Ventilation gap
- ⑨ Hidden clamp MFT-CH
- ⑩ Cladding

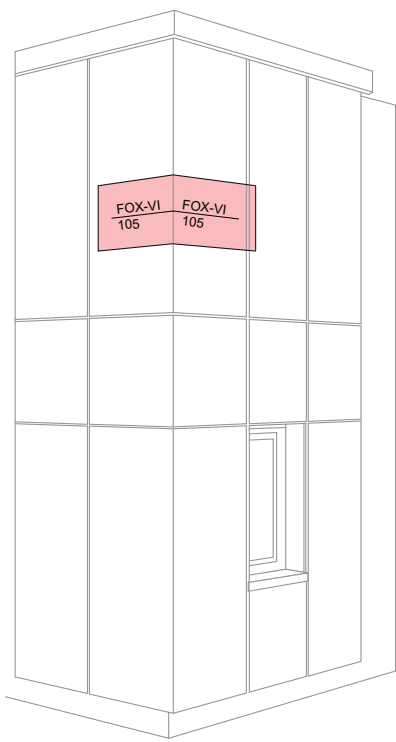


# MFT-FOX VI 105



**Legend:**

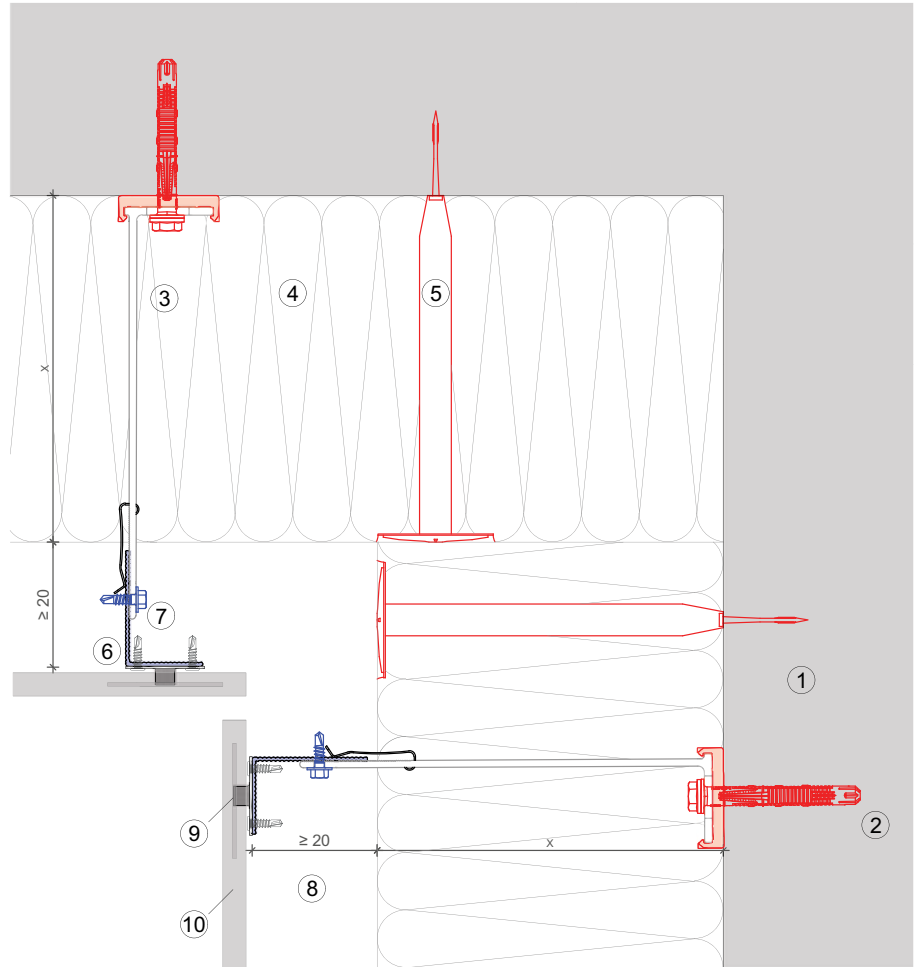
- ① Base material
- ② Anchor acc. to static
- ③ Bracket and isolator MFT-FOX VI
- ④ Insulation
- ⑤ Fixing insulation
- ⑥ Profile
- ⑦ Self drilling screw
- ⑧ Ventilation gap
- ⑨ Hidden clamp MFT-CH
- ⑩ Cladding



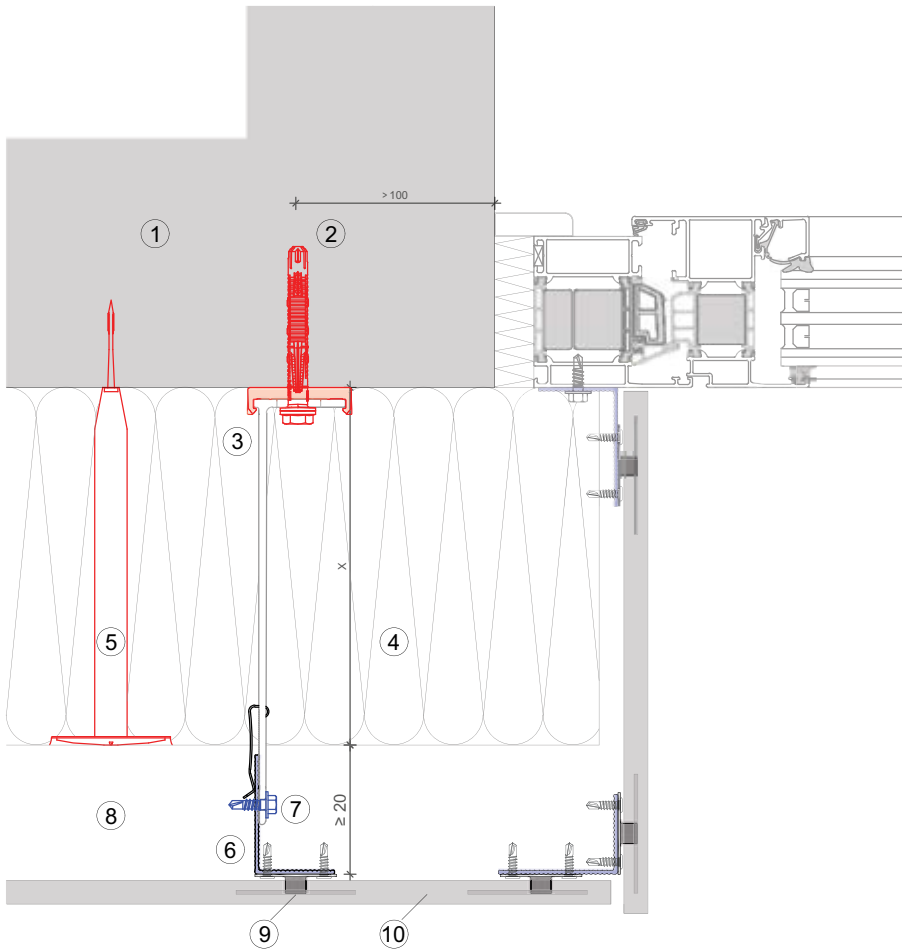
MFT-FOX VI 106

**Legend:**

- ① Base material
- ② Anchor acc. to static
- ③ Bracket and isolator MFT-FOX VI
- ④ Insulation
- ⑤ Fixing insulation
- ⑥ Profile
- ⑦ Self drilling screw
- ⑧ Ventilation gap
- ⑨ Hidden clamp MFT-CH
- ⑩ Cladding

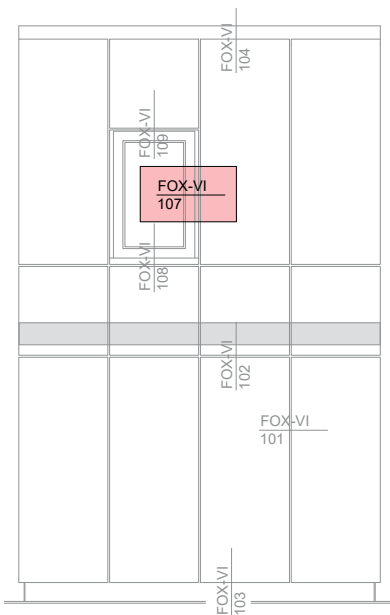


# MFT-FOX VI 107



### Legend:

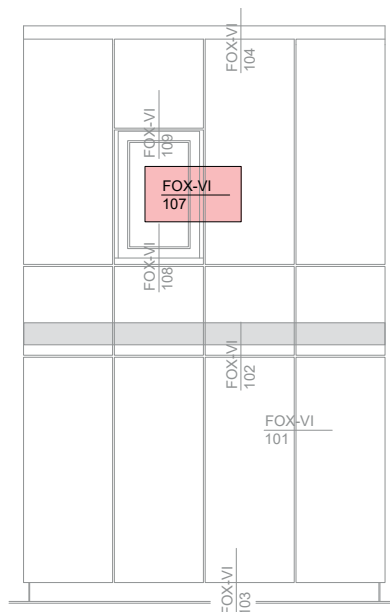
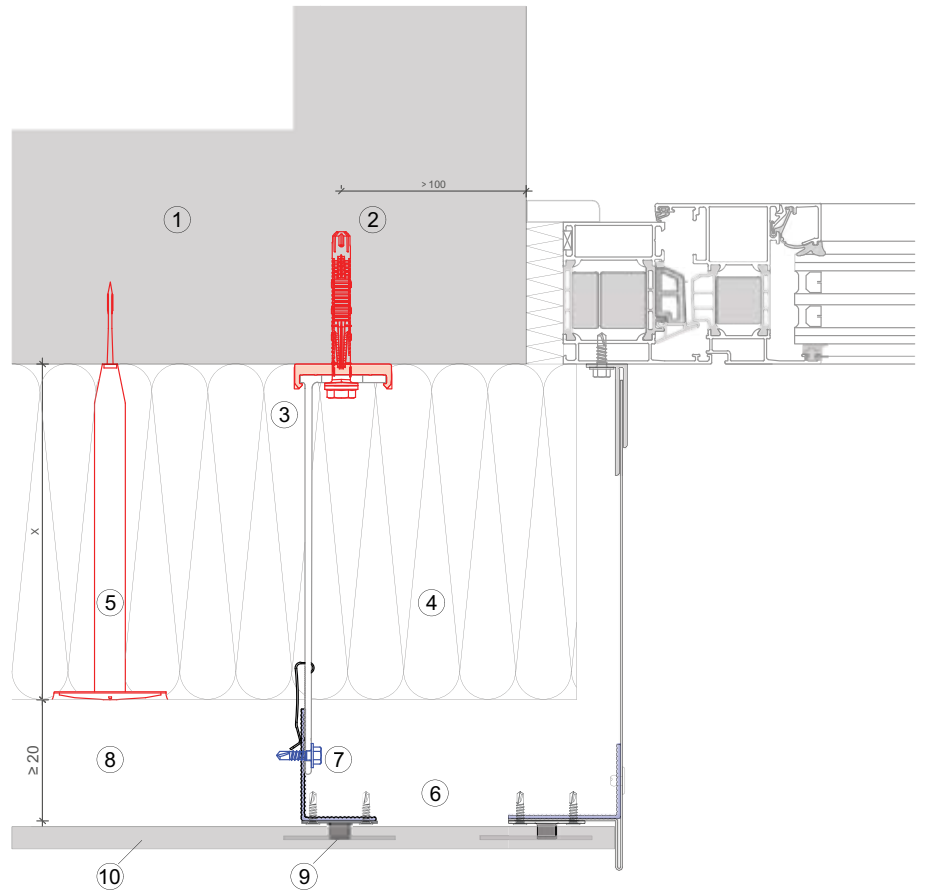
- ① Base material
- ② Anchor acc. to static
- ③ Bracket and isolator MFT-FOX VI
- ④ Insulation
- ⑤ Fixing insulation
- ⑥ Profile
- ⑦ Self drilling screw
- ⑧ Ventilation gap
- ⑨ Hidden clamp MFT-CH
- ⑩ Cladding

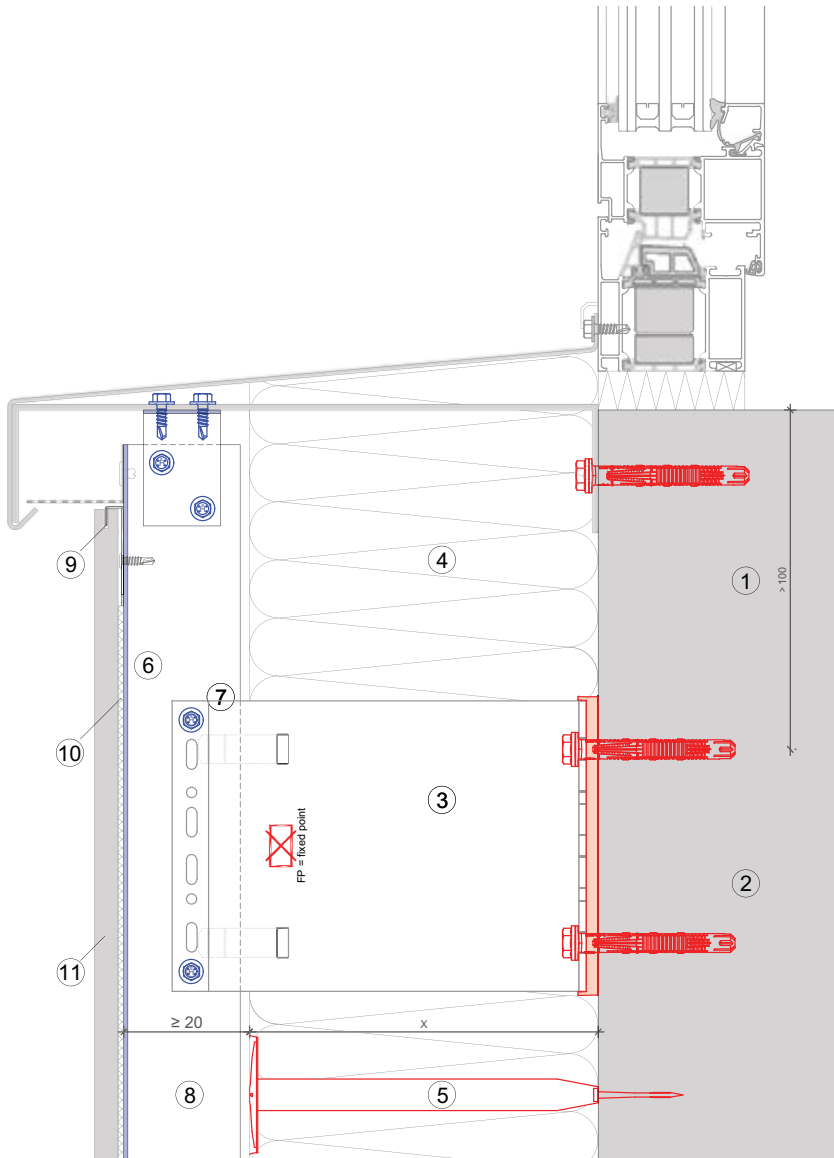


MFT-FOX VI 107

**Legend:**

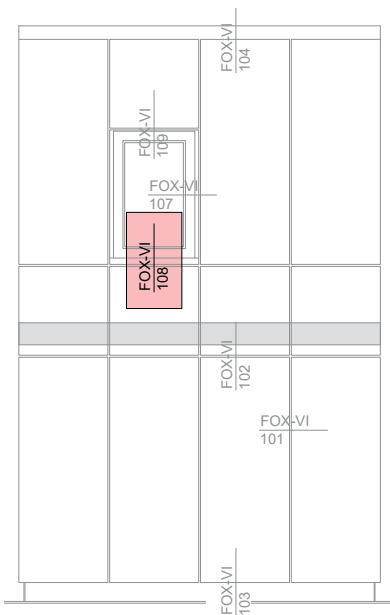
- ① Base material
- ② Anchor acc. to static
- ③ Bracket and isolator MFT-FOX VI
- ④ Insulation
- ⑤ Fixing insulation
- ⑥ Profile
- ⑦ Self drilling screw
- ⑧ Ventilation gap
- ⑨ Hidden clamp MFT-CH
- ⑩ Cladding





**Legend:**

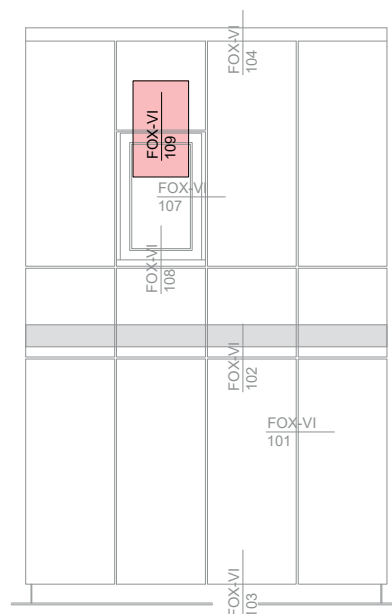
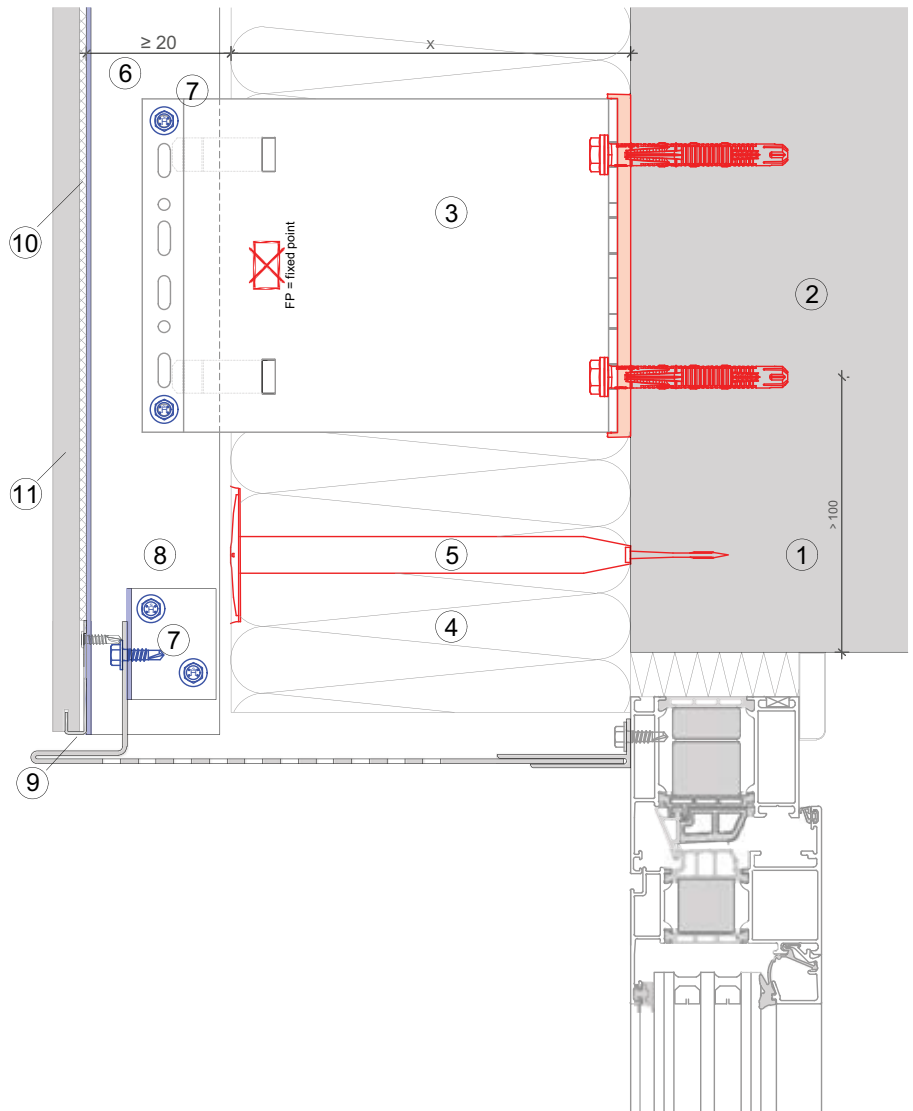
- ① Base material
- ② Anchor acc. to static
- ③ Bracket and isolator MFT-FOX VI
- ④ Insulation
- ⑤ Fixing insulation
- ⑥ Profile
- ⑦ Self drilling screw
- ⑧ Ventilation gap
- ⑨ Hidden clamp MFT-CH
- ⑩ Cladding



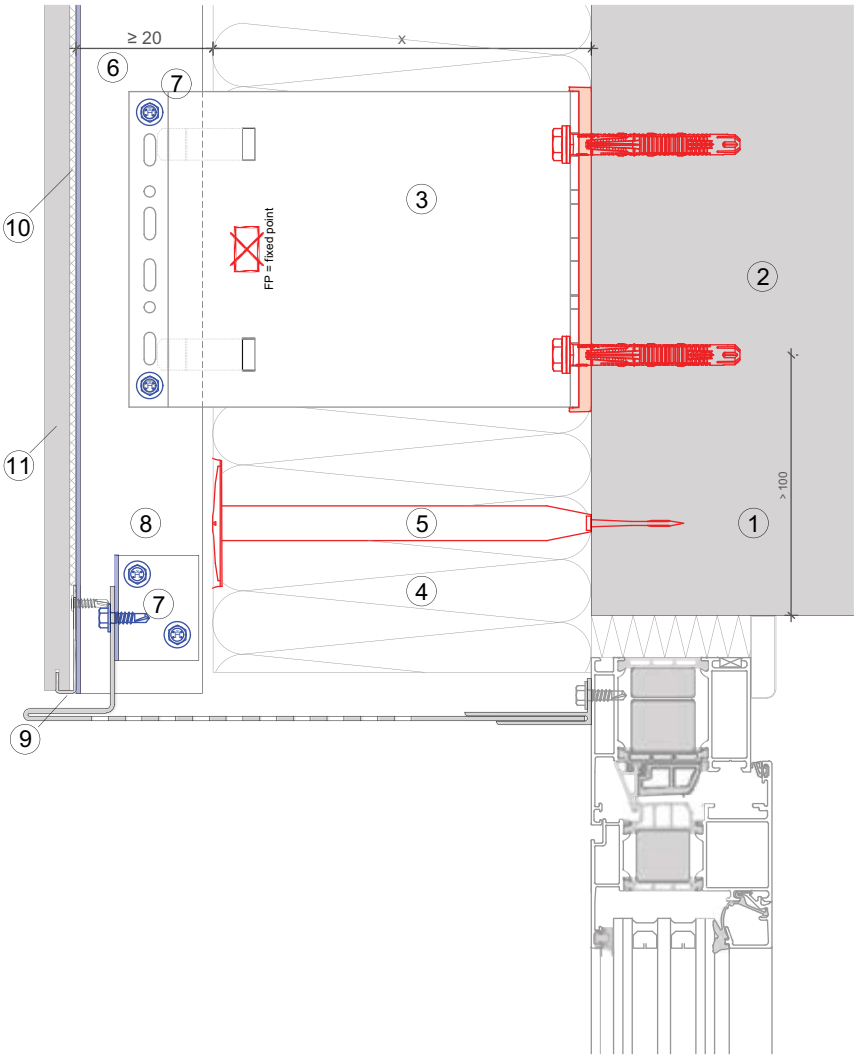
MFT-FOX VI 109

Legend:

- ① Base material
- ② Anchor acc. to static
- ③ Bracket and isolator MFT-FOX VI
- ④ Insulation
- ⑤ Fixing insulation
- ⑥ Profile
- ⑦ Self drilling screw
- ⑧ Ventilation gap
- ⑨ Hidden clamp MFT-CH
- ⑩ Cladding

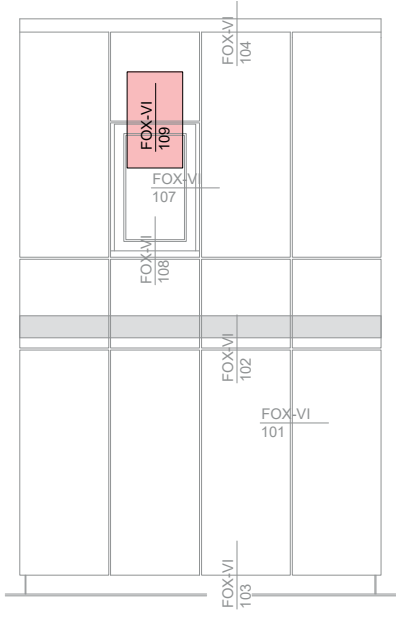


# MFT-FOX VI 109



**Legend:**

- ① Base material
- ② Anchor acc. to static
- ③ Bracket and isolator MFT-FOX VI
- ④ Insulation
- ⑤ Fixing insulation
- ⑥ Profile
- ⑦ Self drilling screw
- ⑧ Ventilation gap
- ⑨ Hidden clamp MFT-CH
- ⑩ Cladding

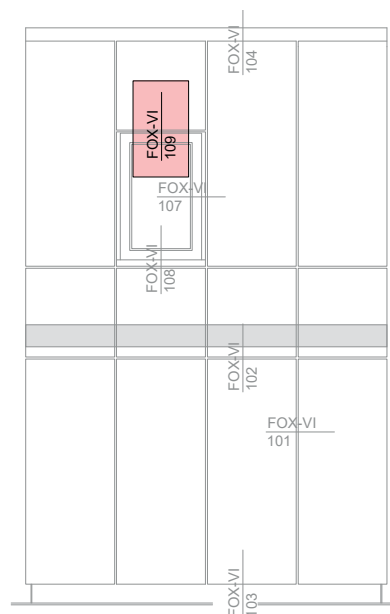
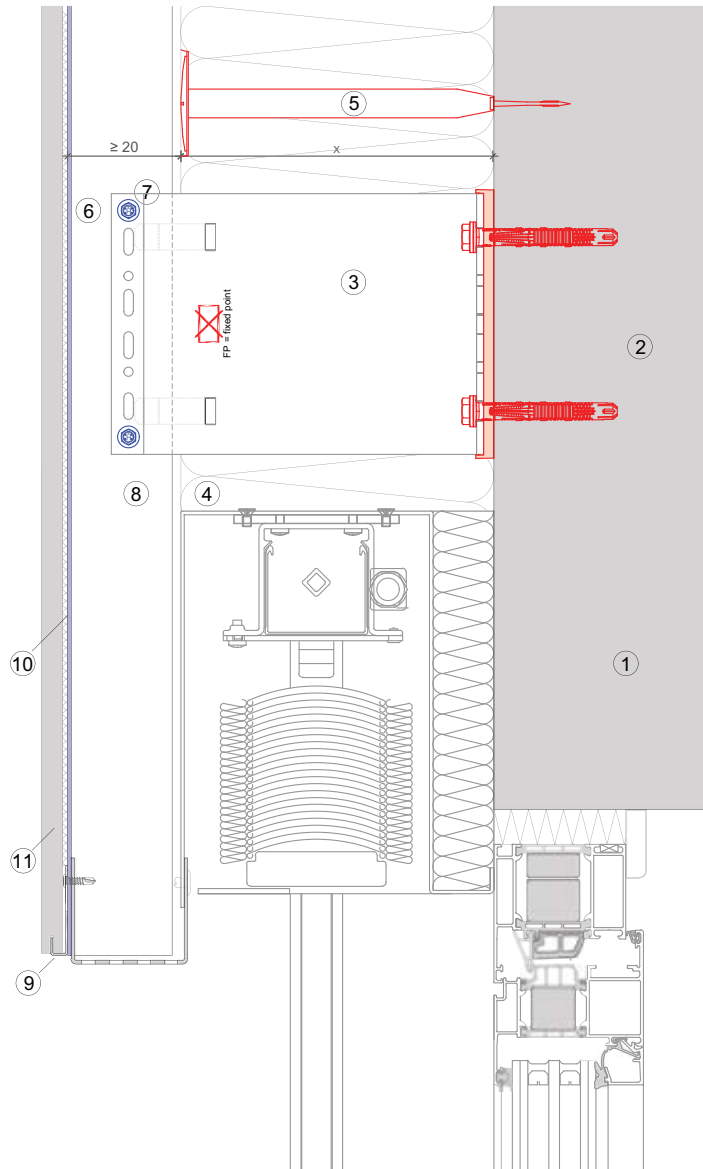




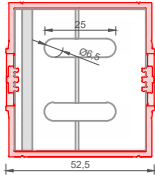
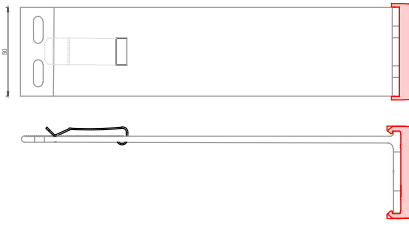
MFT-FOX VI 109

Legend:

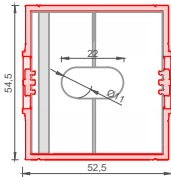
- ① Base material
- ② Anchor acc. to static
- ③ Bracket and isolator MFT-FOX VI
- ④ Insulation
- ⑤ Fixing insulation
- ⑥ Profile
- ⑦ Self drilling screw
- ⑧ Ventilation gap
- ⑨ Hidden clamp MFT-CH
- ⑩ Cladding



## TIPOLOGIE DI STAFFE



Direct fastening and Screws



Anchors

### MFT-FOX VI Small

Order description	Item No.	Length
<b>DIRECT FASTENING and SCREWS D=6,5 mm</b>		
MFT-FOX VI 40 S 6.5	2305768	40 mm
MFT-FOX VI 60 S 6.5	2305769	60 mm
MFT-FOX VI 80 S 6.5	2305892	80 mm
MFT-FOX VI 100 S 6.5	2305893	100 mm
MFT-FOX VI 120 S 6.5	2305894	120 mm
MFT-FOX VI 140 S 6.5	2305895	140 mm
MFT-FOX VI 160 S 6.5	2305896	160 mm
MFT-FOX VI 180 S 6.5	2305891	180 mm
MFT-FOX VI 200 S 6.5	2305890	200 mm
MFT-FOX VI 220 S 6.5	2305889	220 mm
MFT-FOX VI 240 S 6.5	2305888	240 mm
MFT-FOX VI 260 S 6.5	2305887	260 mm
MFT-FOX VI 280 S 6.5	2305886	280 mm
MFT-FOX VI 300 S 6.5	2305885	300 mm
<b>ANCHORS D=11 mm</b>		
MFT-FOX VI 40 S 11	2305884	40 mm
MFT-FOX VI 60 S 11	2305883	60 mm
MFT-FOX VI 80 S 11	2305882	80 mm
MFT-FOX VI 100 S 11	2305881	100 mm
MFT-FOX VI 120 S 11	2305880	120 mm
MFT-FOX VI 140 S 11	2305897	140 mm
MFT-FOX VI 160 S 11	2305898	160 mm
MFT-FOX VI 180 S 11	2305899	180 mm
MFT-FOX VI 200 S 11	2305900	200 mm
MFT-FOX VI 220 S 11	2305901	220 mm
MFT-FOX VI 240 S 11	2305902	240 mm
MFT-FOX VI 260 S 11	2305903	260 mm
MFT-FOX VI 280 S 11	2305904	280 mm
MFT-FOX VI 300 S 11	2305905	300 mm

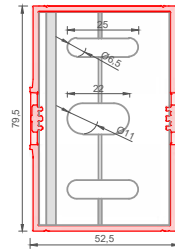
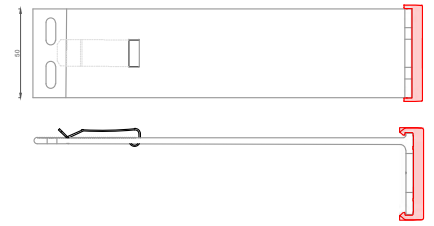
The length shown includes the isolator thickness.

## TIPOLOGIE DI STAFFE

## MFT-FOX VI Medium

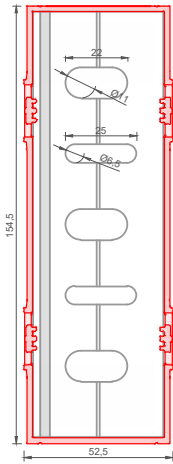
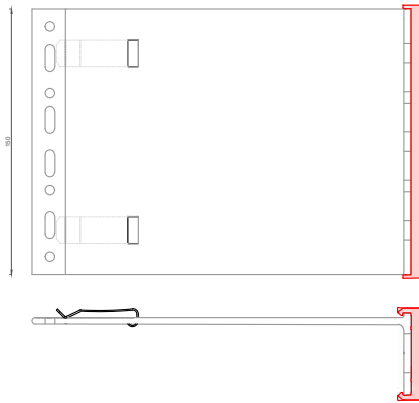
Order description	Item No.	Length
<b>DIRECT FASTENING, SCREWS D=6,5 mm and ANCHORS D=11 mm</b>		
MFT-FOX VI 40 M 6.5 / 11	2305984	40 mm
MFT-FOX VI 60 M 6.5 / 11	2305983	60 mm
MFT-FOX VI 80 M 6.5 / 11	2305982	80 mm
MFT-FOX VI 100 M 6.5 / 11	2305981	100 mm
MFT-FOX VI 120 M 6.5 / 11	2305980	120 mm
MFT-FOX VI 140 M 6.5 / 11	2305979	140 mm
MFT-FOX VI 160 M 6.5 / 11	2305978	160 mm
MFT-FOX VI 180 M 6.5 / 11	2305977	180 mm
MFT-FOX VI 200 M 6.5 / 11	2305976	200 mm
MFT-FOX VI 220 M 6.5 / 11	2305975	220 mm
MFT-FOX VI 240 M 6.5 / 11	2305974	240 mm
MFT-FOX VI 260 M 6.5 / 11	2305973	260 mm
MFT-FOX VI 280 M 6.5 / 11	2305972	280 mm
MFT-FOX VI 300 M 6.5 / 11	2305971	300 mm

The length shown includes the isolator thickness.



Direct fastening  
Screws and  
Anchors

## TPOLOGIE DI STAFFE



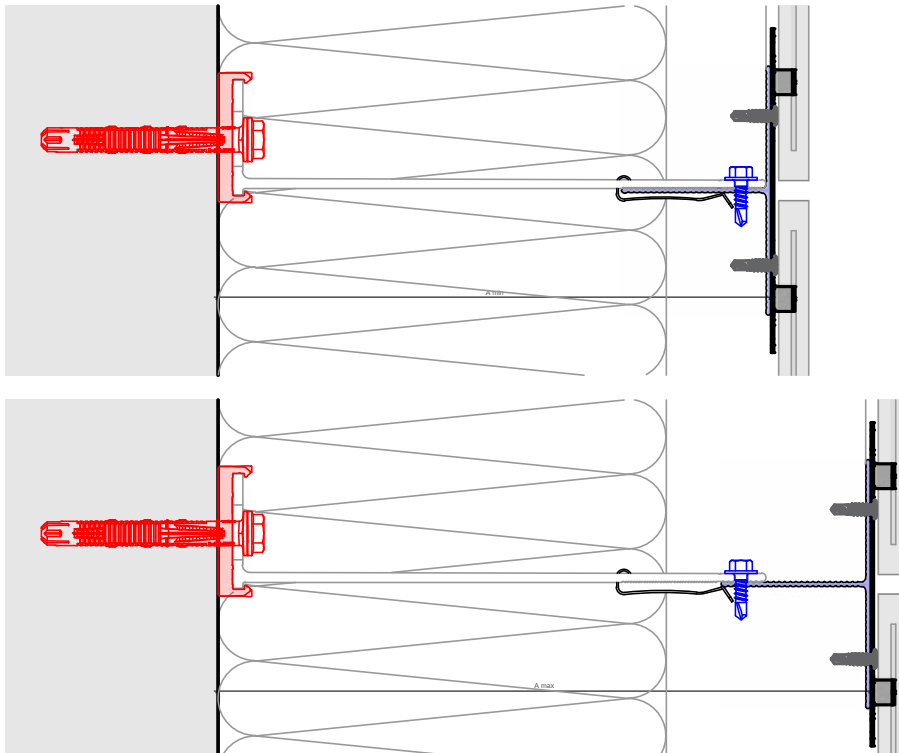
Direct fastening  
Screws and  
Anchors

### MFT-FOX VI Large

Order description	Item No.	Length
<b>DIRECT FASTENING, SCREWS D=6,5 mm and ANCHORS D=11 mm</b>		
MFT-FOX VI 40 L 6.5 / 11	2305950	40 mm
MFT-FOX VI 60 L 6.5 / 11	2305949	60 mm
MFT-FOX VI 80 L 6.5 / 11	2305948	80 mm
MFT-FOX VI 100 L 6.5 / 11	2305947	100 mm
MFT-FOX VI 120 L 6.5 / 11	2305946	120 mm
MFT-FOX VI 140 L 6.5 / 11	2305945	140 mm
MFT-FOX VI 160 L 6.5 / 11	2305944	160 mm
MFT-FOX VI 180 L 6.5 / 11	2305943	180 mm
MFT-FOX VI 200 L 6.5 / 11	2305942	200 mm
MFT-FOX VI 220 L 6.5 / 11	2305941	220 mm
MFT-FOX VI 240 L 6.5 / 11	2305940	240 mm
MFT-FOX VI 260 L 6.5 / 11	2305939	260 mm
MFT-FOX VI 280 L 6.5 / 11	2305938	280 mm
MFT-FOX VI 300 L 6.5 / 11	2305937	300 mm

The length shown includes the isolator thickness.

## CAPACITÀ DI REGOLAZIONE



Profiles	MFT-T 60x80x1,8 6m 60x100x1,8 6m 60x120x1,8 6m		MFT-T 40x80x1,8 6m		MFT-L 60x40x1,8 6m		MFT-L 40x40x1,8 6m"	
	A min*	A max*	A min*	A max*	A min*	A max*	A min*	A max*
MFT-FOX VI 40 S/M/L 6,5/11	75,8	80	55,8	60	75,8	80	55,8	60
MFT-FOX VI 60 S/M/L 6,5/11	75,8	100	61,8	80	75,8	100	60	80
MFT-FOX VI 80 S/M/L 6,5/11	81,8	120	81,8	100	80	120	80	100
MFT-FOX VI 100 S/M/L 6,5/11	101,8	140	101,8	120	100	140	100	120
MFT-FOX VI 120 S/M/L 6,5/11	121,8	160	121,8	140	120	160	120	140
MFT-FOX VI 100 S/M/L 6,5/11	141,8	180	141,8	160	140	180	140	160
MFT-FOX VI 40 S/M/L 6,5/11	161,8	200	161,8	180	160	200	160	180
MFT-FOX VI 60 S/M/L 6,5/11	181,8	220	181,8	200	180	220	180	200
MFT-FOX VI 80 S/M/L 6,5/11	201,8	240	201,8	220	200	240	200	220
MFT-FOX VI 100 S/M/L 6,5/11	221,8	260	221,8	240	220	260	220	240
MFT-FOX VI 120 S/M/L 6,5/11	241,8	280	241,8	260	240	280	240	260
MFT-FOX VI 140 S/M/L 6,5/11	261,8	300	261,8	280	260	300	260	280
MFT-FOX VI 160 S/M/L 6,5/11	281,8	320	281,8	300	280	320	280	300
MFT-FOX VI 180 S/M/L 6,5/11	301,8	340	301,8	320	300	340	300	320

\* The distance shown is valid for profile of 1,8 mm.

**PRODOTTI****Bracket fastener**

HUS-HR



HRD-H



HST-R



HSA-R



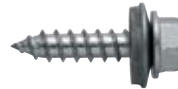
HIT-HY 270



HIT-HY 200-A



S-MP 53S



S-MD 51S / S-MD 53S / S-MD 55S

**Direct fastening:**

Powder-actuated tool



Universal nail X-CR P8



DX cartridge 6.8/11 M10

**Brackets**

MFT-FOX VI Small



MFT-FOX VI Medium



MFT-FOX VI Large



## PRODOTTI

### Profiles

MFT-L



MFT-T



### Profile to bracket fastener

S-AD 01S



### Accessories to profile fastener

S-AD 01LHSS



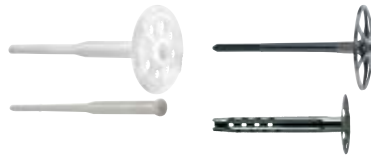
### Other Accessories

MFT-CH



### Insulation fasteners

Insulation fasteners





Hilti Italia  
Piazza Idro Montanelli, 20  
20099 Sesto San Giovanni (MI)

800-827013  
[www.hilti.it](http://www.hilti.it)  
   